



SIMPLE LIFE



SIMPLE LIFE



Canal Street, Wigan, WN6

£920 PCM

Welcome to Simple Life Homes at Canalside. The site benefits from close proximity (1.4 miles) to Wigan town centre and a good strategic location – less than 20 miles from both Manchester and Liverpool city centres with excellent connectivity via road and rail, being 3 miles from the M6/M58 interchange.

The two double bedroom Alder is a spacious apartment perfect for city living. With an open plan kitchen/diner attached to a light and airy living room, it is the perfect space for entertaining guests. Benefiting from two bathrooms – one en-suite and another full bathroom suite – the apartment is great for friends sharing or couples who enjoy having a little extra room.

Complete with integrated kitchen appliances, including a washing machine, dishwasher and hob/oven, isn't it time for you to start living the Simple Life?

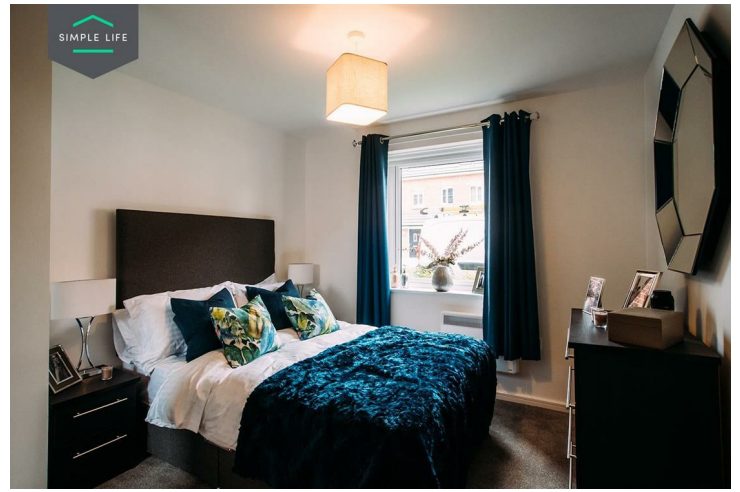
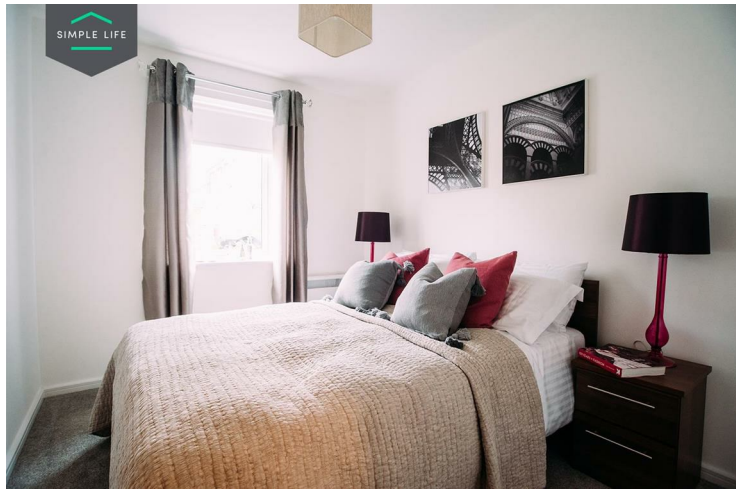
Ideal for families, there are 45 primary and secondary schools rated 'Good' or 'Outstanding' by Ofsted within 3 miles of the site.

Robin Retail & Leisure Park is one of the Borough's principle sport, leisure and retail complexes, featuring a multiplex cinema, major retail brands including Next and Matalan, as well as a football centre and gym. In addition, Wigan's main shopping centre The Grand Arcade includes many additional large stores such as M&S, Debenhams and TKMaxx.

To visit the site, use postcode WN6 7QF for Canal Street.

Deposit £1060
Holding Deposit £210
Unfurnished
Council Tax B
Available 3rd December 2025





Key Features

- Private driveway
- Fitted wardrobes to master bedroom
- Fridge freezer
- Oven and hob
- Dark ash style worktops
- Security alarm system
- Dishwasher
- Washing/drying machine
- Light wash wood effect flooring
- Modern, white kitchen units

Location

